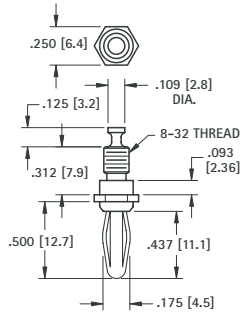


EXTERNAL THREAD



.175 (4.5)
Plug



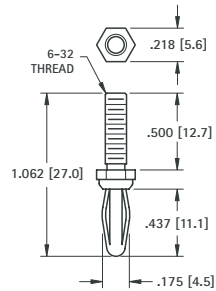
MATERIAL:

Spring: Beryllium Copper
Body: Brass, Nickel Plate

CAT. NO. 652



.175 (4.5)
Plug



MATERIAL:

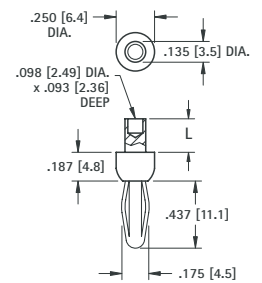
Spring: Beryllium Copper
Body: Brass, Nickel Plate

CAT. NO. 653

STANDARD RIVET



.175 (4.5)
Plug



MATERIAL:

Spring: Beryllium Copper
Body: Brass, Nickel Plate

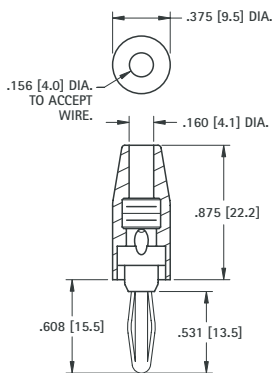
CAT. NO.	L
552-3	.187 (4.7)
552-4	.218 (5.5)

STANDARD SOLDERLESS

SOLDERLESS CONNECTION



.175 (4.5)
Plug



MATERIAL:

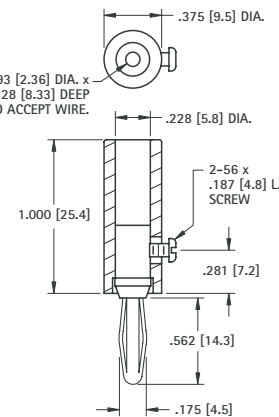
Spring: Nickel Silver
Body: Brass, Nickel Plate
Handle: Nylon

CAT. NO.	COLOR
6078	RED
6079	BLACK

SOLDERLESS WITH SET SCREW



.175 (4.5)
Plug



MATERIAL:

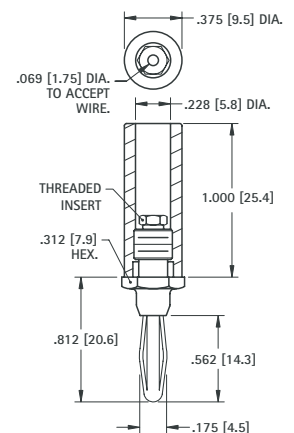
Spring: Nickel Silver
Body: Brass, Nickel Plate
Handle: Nylon

CAT. NO.	COLOR
6084	RED
6085	BLACK

SOLDERLESS CONNECTION



.175 (4.5)
Plug



MATERIAL:

Spring: Nickel Silver
Body: Brass, Nickel Plate
Handle: Nylon

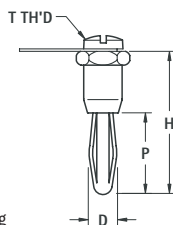
CAT. NO.	COLOR
6082	RED
6083	BLACK

BANANA PLUGS

INTERNAL THREAD



Supplied with screw and lug
Unassembled



MATERIAL:

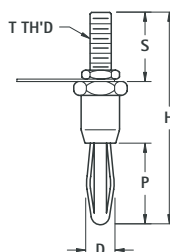
Spring: Phosphor Bronze (Cat. No. 6072)
Nickel Silver (Cat. No. 6073)
Body: Brass, Nickel Plate

CAT. NO.	D	P	H	T
6072	.175 (4.5)	.531 (13.5)	.937 (23.8)	6-32
6073	.300 (7.5)	.750 (19.1)	1.12 (28.4)	10-32

EXTERNAL THREAD



Supplied with nut and lug
Unassembled



MATERIAL:

Spring: Phosphor Bronze (Cat. No. 6074)
Nickel Silver (Cat. No. 6075)
Body: Brass, Nickel Plate

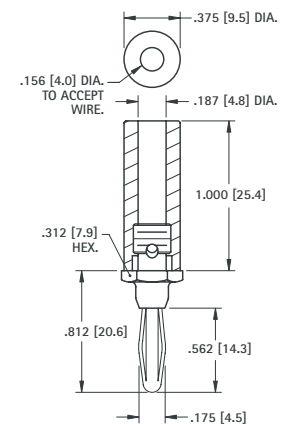
CAT. NO.	D	P	H	S	T
6074-1	.175 (4.5)	.531 (13.5)	1.125 (28.6)	.375 (9.5)	6-32
6074-2	.175 (4.5)	.531 (13.5)	1.500 (38.1)	.750 (19.1)	6-32
6075	.300 (7.5)	.750 (19.1)	1.750 (44.5)	.625 (15.9)	.250-28

STANDARD INSULATED



.175 (4.5)
Plug

SOLDER CONNECTION



MATERIAL:

Spring: Nickel Silver
Body: Brass, Nickel Plate
Handle: Nylon

CAT. NO.	COLOR
6080	RED
6081	BLACK